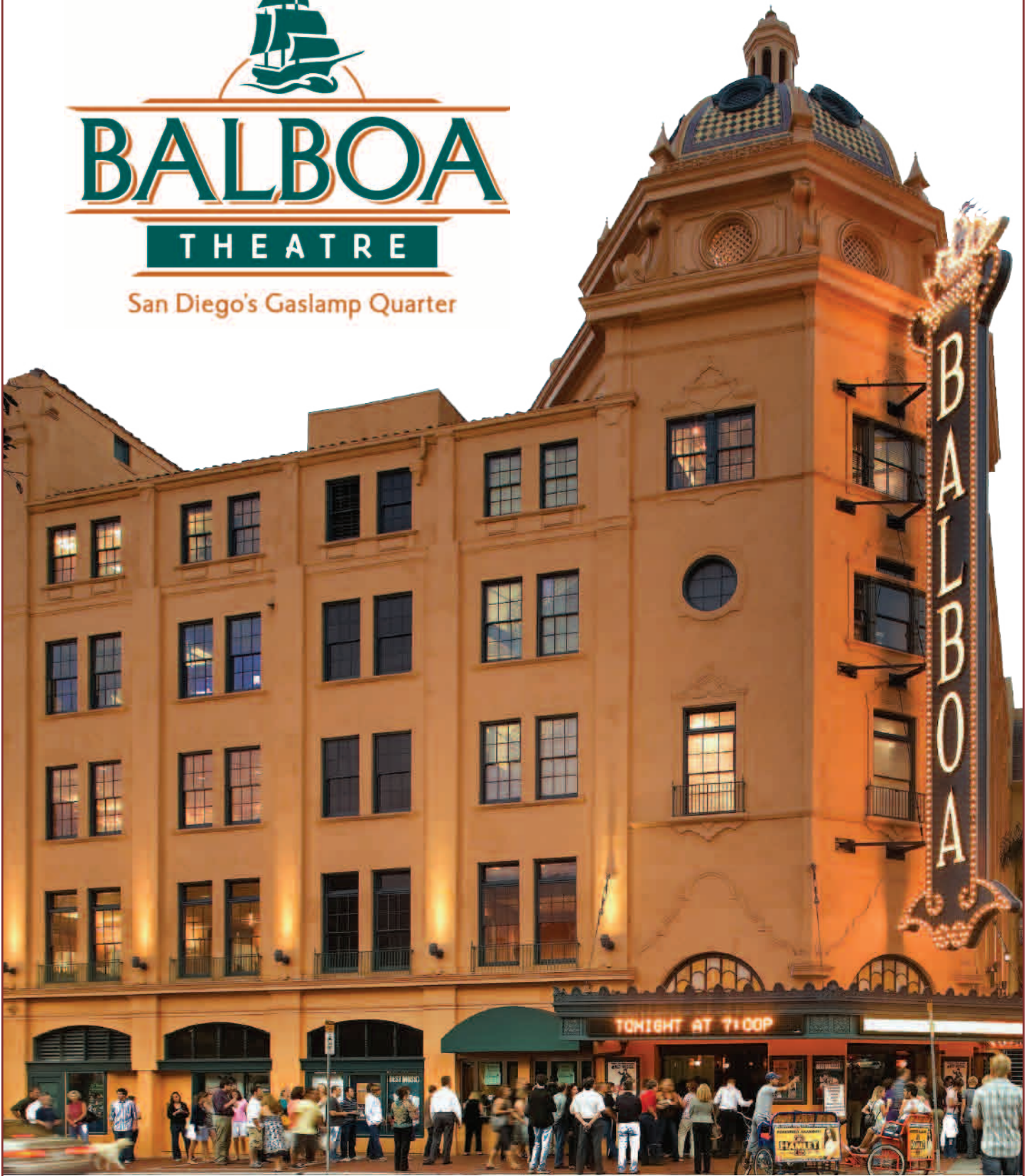




# BALBOA

THEATRE

San Diego's Gaslamp Quarter



PRODUCTION INFORMATION

Thank you for your interest in San Diego's historic Balboa Theatre. This information is provided to assist you in planning your event. The Balboa Theatre was originally opened in 1924 as a vaudeville house and then transitioned into showing films in the 1930's and continued operating until 1985. It was closed at that time, until being reopened in January 2008 following a \$26.5 million restoration and renovation by the City's Redevelopment Agency.

San Diego Theatres welcomes the opportunity to work with you and to make your event a success at the Balboa Theatre.

**GENERAL ACCESS**

Administration & Booking . . . .(619) 615-4000  
 Event & Patron Services . . . .(619) 615-4003  
 Primary FAX . . . . .(619) 615-4001

Ticket Sales & Information . . . .(619) 570-1100

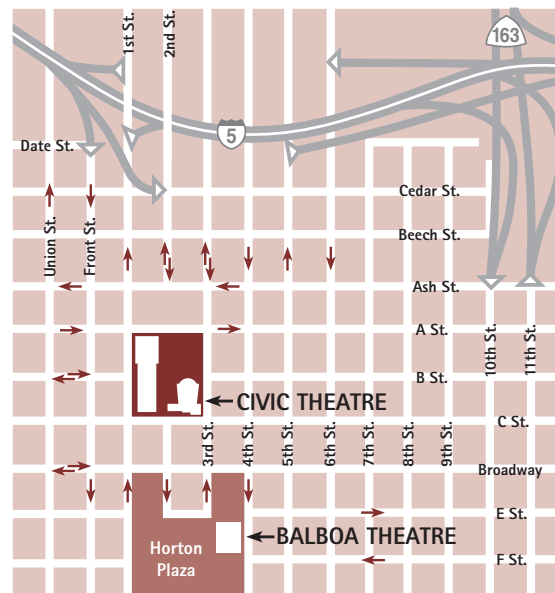
**Ticketing Services**

Management . . . . .(619) 615-4172  
 Ticketing Services FAX . . . . .(619) 615-4175

**Production & Facility Services**

Management . . . . .(619) 615-4150  
 Production FAX . . . . .(619) 615-4155

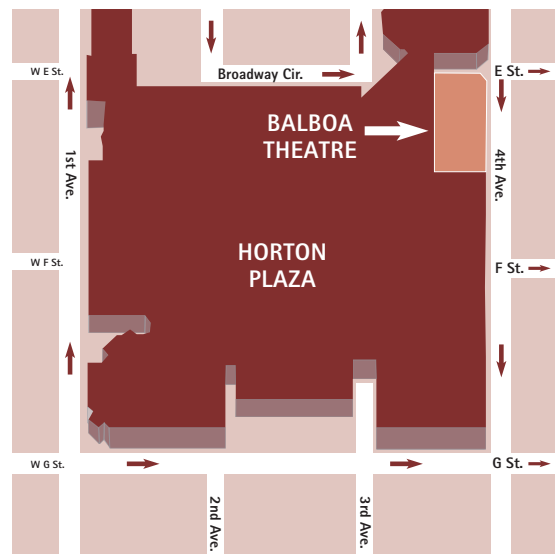
Theatre Location . . . . .868 Fourth Ave. (at E St.)  
 San Diego, CA 92101



**GENERAL INFORMATION**

The Balboa Theatre is a 1,339 capacity restored historic performing arts venue. It was originally opened in 1924 as a vaudeville house and then transitioned into a movie palace. It was closed in the 1980's and was awaiting its rebirth for over twenty years. The City's Redevelopment Agency made the commitment to retain it as a publicly-owned venue for the benefit for future generations of San Diegans, and invested \$26 million into its renovation and restoration.

San Diego Theatres, a non-profit, public benefit corporation, manages and operates the Balboa Theatre on behalf of the City and its citizens. San Diego Theatres also manages and operates the San Diego Civic Theatre.



**PRODUCTION INFORMATION**

<b>Proscenium Opening</b>	
Height	24'
Width	41'
<b>Selected Measurements (subject to change)</b>	
Proscenium to Upstage Pillars	27'5"
Curtain line to Apron Edge	4'
Curtain line to Orchestra Pit Stage Extension	14' 6"
Smoke pocket to Last Line Set	27'
Wall to Wall on Stage	82'
Load-in Door (door is arched)	10'w x 10'h-12'h
Interior Dock to Stage Door	7'w x 12'h
Floor to Grid	79'
Curtain Line to Orchestra Rear Wall	96'
Curtain Line to Balcony Rail (center)	58'
Curtain Line to Follow Spot Booth	116'
Stage Deck Above Orchestra Floor	3' 6"

The stage is constructed of soft wood on wood sleepers and covered with 1/4" masonite. The stage is painted black.

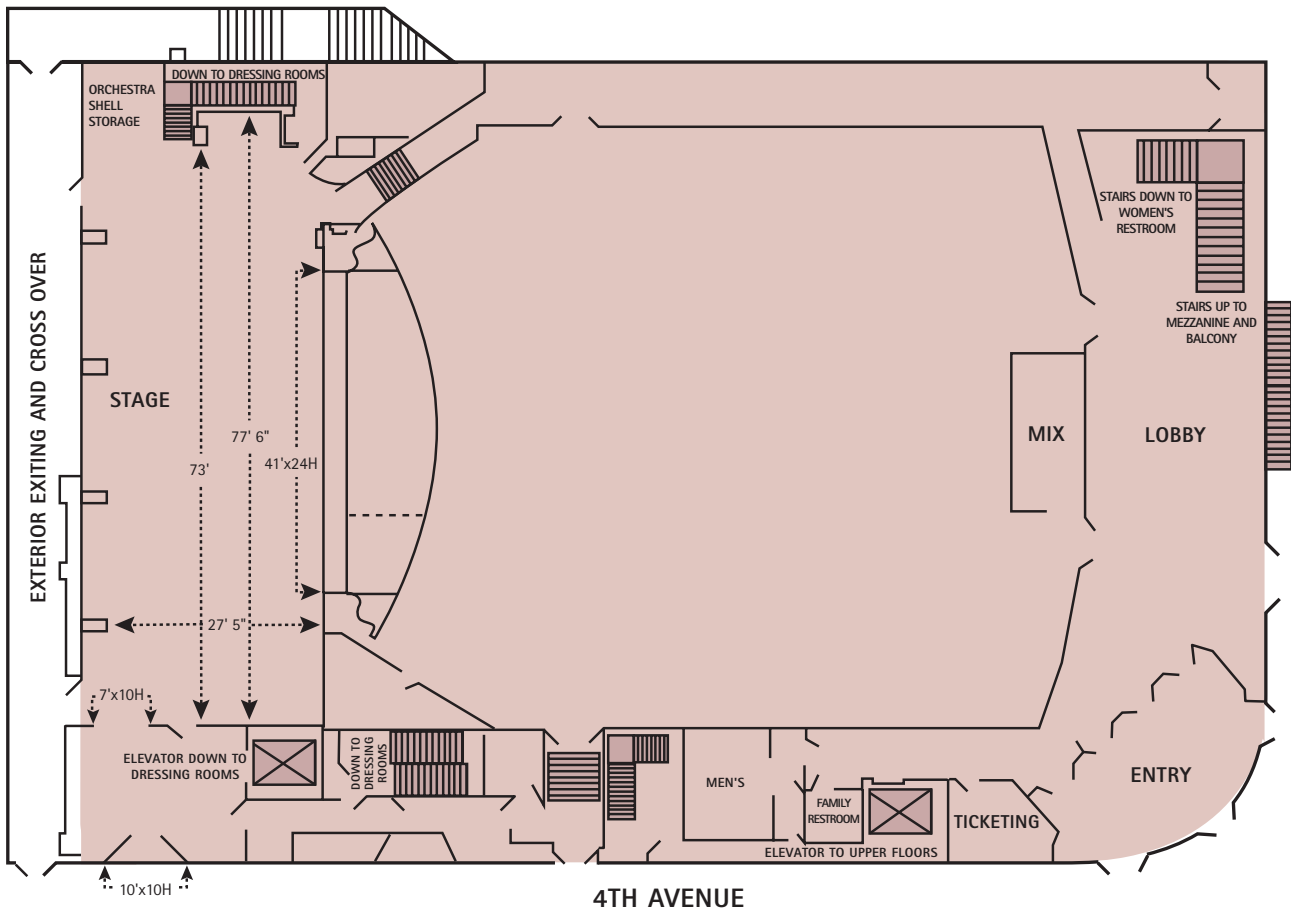
The Orchestra Pit is a mechanical Gala lift that can be used as an apron extension, at Orchestra seating level, Orchestra Pit level, and may be used to transport equipment and materials to the basement. The overall dimensions of the Pit are approximately 10'6" by 40'. Weight capacity is 50 lbs/sq ft live load lifting and 150 lbs/sq ft live load static capacity.

The pit lift is in two sections. The stage right section is approximately 12' wide and also serves as the Organ lift. The stage left section is approximately 28' wide. When the pit lift is at seating height, it can accommodate audience seating of 27.

Loading is on the west side of Fourth Avenue, just south of E Street, along the side of the Theatre. The loading door is 10' wide by 10' to 12' high (the center of the door is arched.) Except while being loaded/unloaded, vehicles must be relocated from this loading zone. Production will endeavor to assist in facilitating alternate holding/staging locations.

There is an exterior cross-over accessible through the upstage exit doors stage right and stage left in the upstage wall.

**1ST FLOOR**



## RIGGING

SET	ITEM
Fixed Teaser - downstage of fire curtain/proscenium	21 17' 7"
Fire Curtain/Smoke Pocket	22 #3 Electric 18' 3"
1 House Curtain 1' 3"	23 18' 11"
2 Border 2' 3"	24 19' 7"
3 Legs 2' 11"	25 Border 20' 3"
4 #1 Electric 3' 7"	26 Black Legs 20' 11"
5 4' 11"	27 21' 7"
6 5' 7"	28 Cyc. Electric 22' 3"
7 6' 3"	29 23' 3"
8 6' 11"	30 23' 11"
9 7' 7"	31 24' 7"
10 Black Border 8' 11"	32 25' 3"
11 Black Legs 9' 7"	33 Black Traveler 25' 11"
12 10' 3"	34 White Cyclorama 26' 7"
13 10'11"	
14 #2 Electric 11' 7"	
15 12' 3"	
16 Mid Black 12'11"	
17 Black Legs 14' 3"	
18 Black Border 15' 7"	
19 16' 3"	
20 16'11"	

There are 33 sets of five (5) line tee-bar guided, single purchase manually operated counter-weighted lines. All sets are on 8" centers, except where there is an empty location. The house curtain and line sets #2 through #18 can be flown to 70'. Line sets #19 through #33 can be flown to 60'11". Battens may be brought in to 4' off stage. Arbor capacity is 1,900#. The rail is on stage right.

The battens are 54' long and are of pipe truss construction. There are no fixed electrics, due to the use of portable cable bundles. All battens may be cleared except for the House Curtain. Orchestra shell ceilings are stored between the pillars of the upstage wall and hung by dedicated ceiling winches.

The house curtain is manually flown and can not travel. It is a reproduction of the historic curtain. The house curtain may not be removed. There is a fixed teaser downstage of the fire curtain within the proscenium

arch opening. Additional house goods are black and consist of four sets of legs, four borders and one full black traveler. There is also a rust scrim.

The Loading Bridge is 72' above stage. Grid Height is 79'2". There is a Pin Rail and Locking Rail on stage right's upper fly floor at 32'.

Over the orchestra pit, there are three pairs of AP hang pick points. There are three additional truss hang pick points just beyond the orchestra pit rail. The AP and truss pick points are center, left and right. Each pair of AP pick points and each truss pick point capacity is 2,000#.

The roof deck of the stage left stair-to-basement enclosure is approximately 21' by 5' and is 16' above stage. Ten feet above that deck is a 1 ton electric chain hoist on a trolley to facilitate the lifting of portable dimmer racks to a stage left jump floor which is 20'6" x 7'10".

The downstage rigging points will accommodate a 46' truss

## SOUND SYSTEM

The house speaker system consists of center, right and left clusters permanently hung within the proscenium arch. These clusters are composed of EAW AX364 and AX396 3-way cabinets. Plus a pair of EAW AX122 cabinets for a low mid fill. There is also a pair of EAW SB1000 subwoofers. For Orchestra front fill coverage, there are JBL VRX 928 cabinets that can be placed on the edge of the stage. Additionally, there are EAW fill speakers mounted at the ceiling over the Balcony to provide fill coverage for the Balcony. For under Balcony fill coverage, there are 4 JBL VRX928 speakers.

The house sound console is a Yamaha CL5 mixer with 64 channels. The mix location is at the rear of the Orchestra. The house system utilizes QSC digital system processors. System equipment includes Tascam Professional CD player, and solid state recorder/CD player/burner. The house console may be removed to accommodate touring sound console as well as for lighting control. Space available for touring sound & light mix consoles is 19'5" wide by 8'6" deep. To accommodate a touring console, a minimum of 175' of cable is required for snaking from the mix location to the stage left deck. All cables must be run through 16" conduit and are not to be run through the seating areas.

The house monitor system has a Yamaha PM5D (non RH), Whirlwind 56 channel 3 way mic split with five 12 channel sub snakes, 10 JBL SRX 712M wedges, 2 JBL SRX 715 side fill speakers, and 10 Crown XTi 4000 series amps. (7 - XTi 4002, and 3 - Xti 4000)

CCTV and Audio program material is available in the dressing rooms, backstage and in the lobbies. Backstage paging is available in the dressing rooms and backstage area. The Theatre is equipped with an infra-red listening system to assist the hearing impaired. An audio feed from touring consoles is required for the activation of this system.

## ADJUSTABLE ACOUSTICS

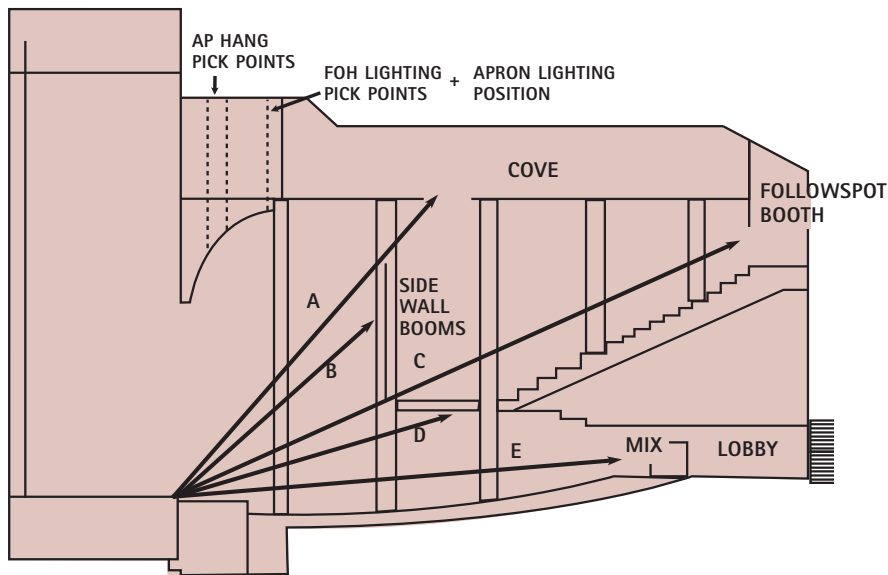
The audience chamber's acoustics are naturally bright for non-amplified sound. For amplified productions, there is a system of acoustic drapery sections that partially cover the side walls of the audience chamber. There are four sets of these 13' side side panels with each composed of two layers of 25 oz velour, sewn flat. The set closest to stage is 50' high, the second set is 39' high, the third set is 29' high and the further from stage set is 17' high. Each panel is operated by a separate electronic winch.

## ORCHESTRA SHELL

The portable orchestra shell is comprised of two ceilings and movable wall units. The ceiling panels consist of two rows of panels suspended from stage rigging battens over the stage. Each row is comprised of four individual panels, each with built-in down lighting fixtures. Panels are stored against the upstage wall between the upstage support pillars. A portable eyebrow is available for hanging over the orchestra pit. However, the portable acoustical eyebrow is stored off-site.



## BALBOA THEATRE CROSS SECTION



### CROSS SECTION

<b>A</b>	Cove	86'
<b>B</b>	Side wall booms	57'
<b>C</b>	Followspot booth	116'
<b>D</b>	Balcony rail at center	59'
<b>E</b>	Mix	89'

### HEIGHT

Stage floor to:	
Mix Position	3'
Loge Floor	16'
Followspot Booth	44'
FOH Lighting pick points	56'

## ELECTRICAL INFORMATION

An ETC Ion console provides the lighting control. It is located adjacent to the sound mix position at the rear of the Orchestra. There is a wireless remote focus unit for remote control of stage lighting dimmers and RVI (Remote Interface Viewing) for the ION.

House dimmer racks contain 244 - 2.4 kW stage lighting dimmers, 5 - 6.0 kW stage lighting dimmers and 24 - 2.4 kW house lighting dimmers.

There is an Ethernet-based control system providing DMX data distribution from the stage lighting control console to the dimmer racks and to control taps/nodes located at each stage lighting position.

Master house light control stations with multiple potentiometers and presets are provided in the control booth and backstage.

There are two Lyciam 2k followspots in the booth with a third 30 amp/208 connector available.

## COMPANY SWITCHES

Company switches are available for temporary show power. Each of these are 120/208V, 3-phase, 5-wire inputs are located as follows:

- 400 amp - SR upstage wall for stage machinery
- 400 amp - 2 each - SL (fly one on the floor for touring dimmer racks)
- 200 amp - SL upstage wall for audio
- 100 amp - Grid level for stage machinery
- 100 amp - Auditorium attic for FOH truss motor chain hoists
- 100 amp - Loading area for production trucks

## ETHERNET TAP/NODE

LOCATION	QUANTITY
Control Booth	2 taps with 4 switches
FOH ceiling catwalk	1 tap with 4 switches
FOH proscenium down light slot	1 tap with 4 switches
Balcony rail	1 tap with 4 switches
FOH box booms (both sides)	1 tap with 4 switches
SL fly floor	1 tap with 4 switches
SR fly floor	1 tap with 4 switches
SL stage level, downstage	1 tap with 4 switches
SR stage level, downstage	1 tap with 4 switches
SL stage level, upstage	1 tap with 4 switches & 1 node with 2 DMX outputs
SL stage level, upstage	1 tap with 4 switches & 1 node with 2 DMX outputs
Orchestra pit	1 tap with 4 switches
Portable	1 node for control console
Portable	8 nodes with 2 DMX outputs
Portable	1 node for stage lighting control console video output

## LIGHT DIMMING DISTRIBUTION SYSTEM \*

LOCATION	QUANTITY	CIRCUIT CAPACITY
FOH ceiling cove	36	20A
FOH down light slot	14	20A
Balcony rail	12	20A
Balcony rail	2	50A
Box Boom, House Right	16	20A
Box Boom, House Left	16	20A
Fly Floor, SL	18	20A
Fly Floor, SR	18	20A
Electrics in multi-cabled 6 circuit "batten lays" on stage pipe battens		
Electrics, #1	30	20A
Electrics, #2	30	20A
Electrics, #3	24	20A
Stage level	24	20A
Stage level	3	50A
Orchestra Pit	6	20A

\* includes outlet boxes and circuits

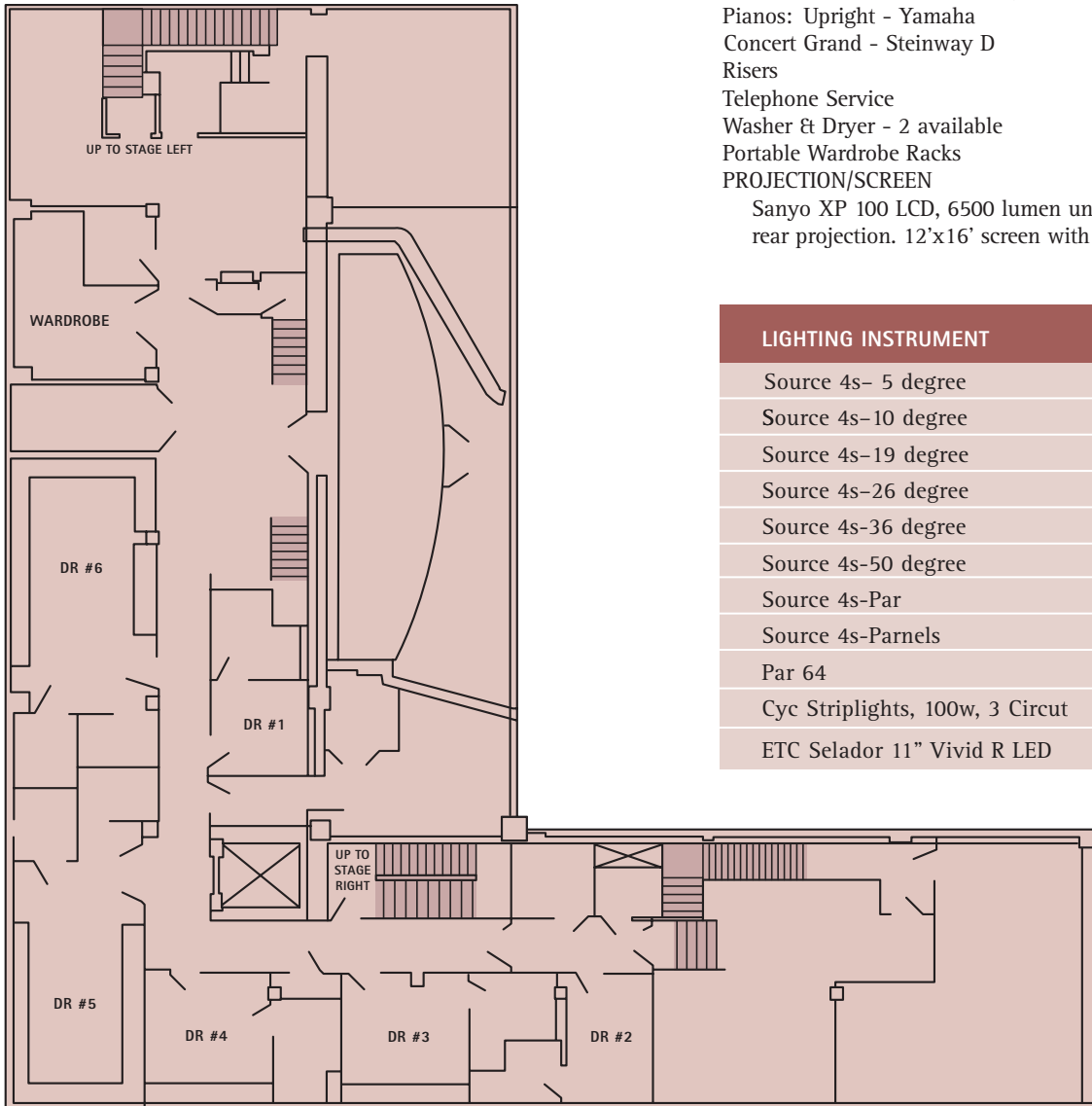
**DRESSING ROOMS / LOWER LEVEL**

All dressing rooms are on the lower level below stage. There are stairs just inside the stage door on Fourth Ave., stairs on SR and a 4000# freight elevator serving the loading dock and lower level dressing room area.

Each dressing room has make-up mirrors with lighting, counters, sinks, restroom, and shower. Total make-up stations is 43.

- Dressing Rooms #1 & 2 - capacity of 2 per room
- Dressing Rooms #3 & 4 - capacity of 4 per room
- Dressing Room #5 - capacity of 15
- Dressing Room #6 - capacity of 16

There is a wardrobe room with two washers and dryers (with usage fees) and additional power outlets.



**EQUIPMENT (SUBJECT TO AVAILABILITY)**

*Contact us for applicable costs*

- Audio Monitor System - JBL Wedges - 6, JBL Side Fills - 2
- CD Player - 3
- Clear Com Intercom
- Clear Com Intercom (in excess of 3 stations)
- Curtains: Black Legs & Boarders - 4 of each
  - Black Back Drop (on traveler)
  - White Cyclorama
- Dance Floor Surface, Harlequin Reversible, black/gray
- Follow Spots, Lycian XLT 2k xenon - 2 available
- Genie Lift
- Internet Access - (wired & wireless)
- Lectern - Formal Free-Standing
- Microphones: Wireless + Wired
- Direct Boxes
- Music Equipment: Conductor's podium
  - Music Stand's w/lights - 30
- Solid State CD Recorder
- Orchestra Shell, walls & ceilings
- Pianos: Upright - Yamaha
- Concert Grand - Steinway D
- Risers
- Telephone Service
- Washer & Dryer - 2 available
- Portable Wardrobe Racks
- PROJECTION/SCREEN
  - Sanyo XP 100 LCD, 6500 lumen unit, either front or rear projection. 12'x16' screen with front and rear sheets.

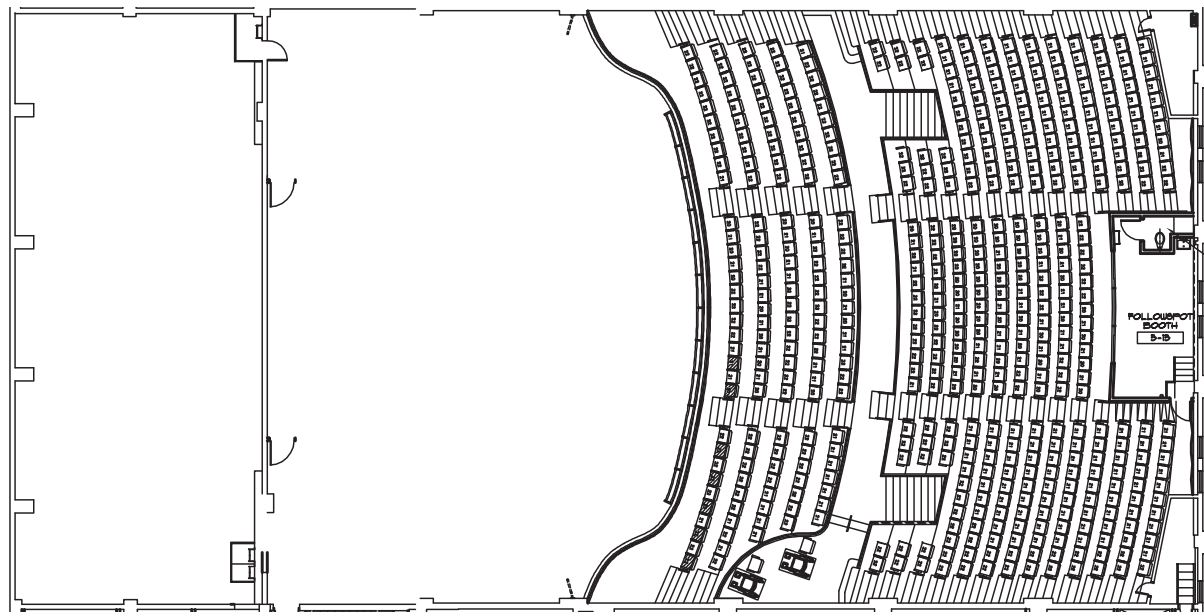
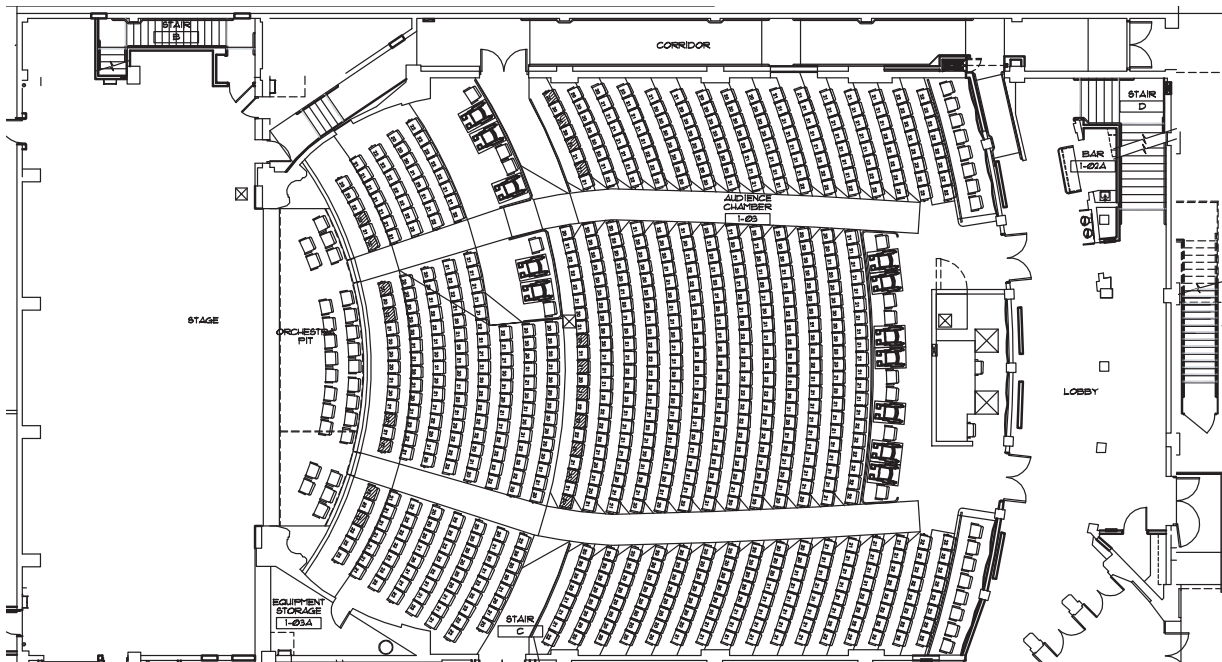
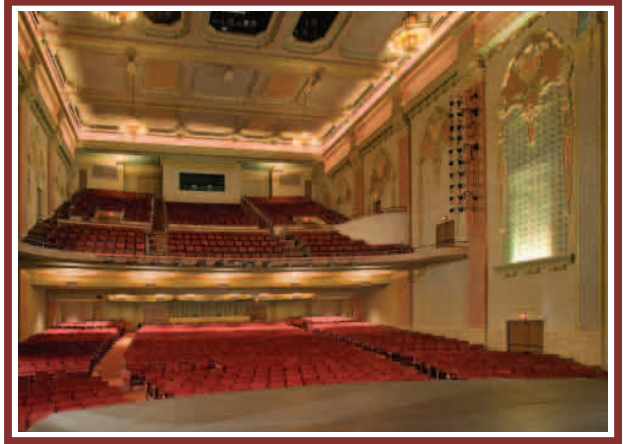
LIGHTING INSTRUMENT	QUANTITY
Source 4s- 5 degree	4
Source 4s-10 degree	20
Source 4s-19 degree	76
Source 4s-26 degree	40
Source 4s-36 degree	24
Source 4s-50 degree	6
Source 4s-Par	18
Source 4s-Parnels	24
Par 64	28
Cyc Striplights, 100w, 3 Circuit	16
ETC Selador 11" Vivid R LED	10

**TOTAL SEATING CAPACITY** ..... 1,339  
**Capacity w/out Orchestra Pit Seats** ..... 1,311

**ORCHESTRA**

Fixed & Loose Seats ..... 760  
 Wheelchair Locations & Companion Seats ..... 24  
 Orchestra Pit Loose Seats ..... 27  
**Main Floor Capacity** ..... 811

Loge ..... 163  
 Balcony  
 Fixed ..... 365  
 Wheelchair Locations & Companion Seats ..... 4  
**Loge & Balcony Capacity** ..... 528





868 Fourth Avenue  
San Diego California 92101

619.615.4000 619.615.4001 FAX  
[www.sandiegotheatres.org](http://www.sandiegotheatres.org)